

YEAR 2 PARENTS' MEETING



OUR TEAM

Jays

Miss Jackson, Mrs Edwards, Mrs Watson,

Mrs May

Goldcrests

Miss Golson, Mrs Nast, Mr Wines

A decorative graphic consisting of several parallel white lines of varying lengths, slanted diagonally from the bottom right towards the top right, located in the lower right corner of the page.

OUR AIMS:



- ▶ Creating a positive learning environment for all children;
- ▶ Making learning enjoyable, exciting and relevant;
- ▶ Encouraging independence and collaborative learning;
- ▶ Developing the skills of every child, including personal, social, health, moral and emotional skills;
- ▶ Developing high aspirations.

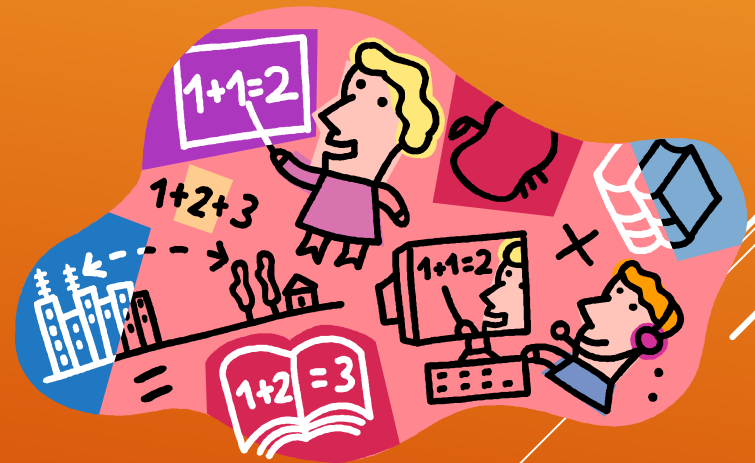
HOW WE CELEBRATE

- ▶ Positivity and praise
- ▶ Stickers
- ▶ Reading pathway prizes
- ▶ House tokens
- ▶ Star of the week
- ▶ Reaching gold
- ▶ FRIDAY assembly celebrations
- ▶ WOW CERTIFICATES.



- ▶ Regular photos of children's learning on the website with details
- ▶ Curriculum overview for the year will be provided on the school's website.

CURRICULUM



EXCITING TOPICS

Yr 2: Dragons
for the first
half term



TOPIC BASED LEARNING

Children will complete a number of topic focused units over each term. Each unit will include a 'learning journey' with learning in different subject areas, such as science, art etc. leading to English writing outcomes.

For example, in Year 2, children will complete:

- ▶ A 3 week unit called 'Tell Me A Dragon' that links art focused learning with poetry writing in English as we make a class book describing our own dragons
- ▶ A unit called 'How to make...' that links science and DT focused learning to writing instructions on how to make a dragon

Certain subject areas or objectives of the Year 2 curriculum may not always link in well with different units, and these will be taught separately as required.

TOPIC BASED LEARNING

THE LOGIC:

- ▶ Children are excited and engaged through learning about many different topics across the term;
- ▶ High quality learning is facilitated, allowing children to make increased connections and progress through linking subject knowledge and skill development across subject areas.

Routines

- 8:45am – 9:00am drop off
- Staggered break time
- Lunch – 12:10-1.10
- Home time- 3.10

Drinks

- Water bottles- in class
- Juice at lunchtime only
- Milk provided for school dinners (20p if not)
- Slushy 50p



Good Food Makes Sense



We recommend that packed lunches should include:

- at least one portion of fruit and/or vegetables every day
- meat, fish or other source of non-dairy protein (e.g. egg, lentils, beans, soya or hummus) every day
- oily fish, such as salmon or tuna occasionally
- a starchy food such bread, pasta, rice, noodles, potatoes or other type of cereals every day
- dairy food such as cheese, yoghurt or fromage frais
- a drink – such as water, milk, squash or pure fruit juice



Packed lunches could include these foods but only as part of a balanced meal:

- cake/muffin
- biscuit
- cereal bar/ rice cake
- crisps



Packed lunches should not include:

- chocolate covered confectionery and sweets
- nuts or nut products (although they can be healthy) because of the danger to other children with allergies

all drinks that are artificially sweetened or carbonated eg fruit shoots, flavoured water or fizzy drinks (with the exception of squash)

Uniform



Yellow polo shirt

Grey trousers, shorts, skirt

Blue and white summer dress

School sweatshirt

Black shoes.

Coat

Book bag

*Please ensure all items are named
with your child's name*



PE

- Wednesday afternoon- tennis
- Thursday morning- circuit training
- Earrings need to be removed or taped over.
- Long hair needs to be tied back.
- PE Kit- white t shirt, blue/black shorts, trainers

Home Learning

- Reading at least 3x a week (logged in reading record book)
- A list of Yr1 tricky spelling words sent out at the start of the year and Yr 2 'common exception words' - sent home each half term
- Games and activities to support in learning at home.
- Holiday homework linked to school learning
- Wow slips- to celebrate achievements at home

Assessment Tests

Year 2 – SATs (reading, writing to include SPaG and handwriting, maths) – May

Phonics screening re-test for those who didn't meet the standard in Year 1 – June

Important Dates

Consultations – Friday 12th October

KSI (Yr 1/2) Christmas Play –
Wednesday 12th, Thursday 13th December



Can you help?
Volunteer reader
School trips
Particular skill/interest

THANK YOU!

